

# INDEX

- INTRODUCTION
- TK-IT VISION
- TK-IT MISSION
- OUR VALUES
- PROFESSIONAL & MANAGED SERVICES
  - Consultancy.
  - Detailed Design and Engineering.
  - Project Management.
  - System Integration and Factory Acceptance Test.
  - Installation, Integrated System Testing and Training.
  - Support, Operation and Maintenance.
- 1. Data Center Design & Preparation.
  - 1.1 Site Preparation.
  - 1.2 Power.
  - 1.3 Cooling.
  - 1.4 Management.
- 2. Network Solutions.
  - 2.1 Switching & Routing
  - 2.2 Wireless & Mobility.
  - 2.3 Unified Communication.
  - 2.4 Security Solutions.
  - 2.5 Structured Cabling.
- 3. HARDWARE SOLUTIONS.
- 4. EXTRA LOW VOLTAGE (ELV)
  - 4.1 Video Surveillance.
  - 4.2 Access Control & Offline Keycard System.
  - 4.3 IPTV
  - 4.4 Public Address System.
  - 4.5 Security Gates.
    - X Ray.
    - Turnstile.
    - Barrier Systems.
    - Pillars and Housing.
    - Slide Gate Openers.
  - 4.6 Fire Alarm System.

# INTRODUCTION:

**TURNKEY INTEGRATED TECHNOLOGIES (TK-IT)** is a leading IT Solution providers, IT System Integrator, and Professional / PM Service Provider, Our calibers accumulating more than 20 years' experience in Egypt and the region passing through different types/sizes of projects for a well-known market leaders' reputable Companies / Vendors, enabling a successful model of services / solutions delivery, by providing a workable solutions designed to meet customers' requirements and recognized as cost competitive, taking accountability that services / solutions can be delivered as designed, suited for the future expendability standardization, and all related risks are considered.

**TK-IT** is pleased to offer the leading-edge Information Technology products, services, and solution based on high quality; high performance products from top leader technology vendors that can help your entity achieve enhanced productivity, increased business agility, and greater competitive advantage.







## TK-IT VISION:

It's not just about being; it's about being the 'to go to' service provider! Our vision at TURNKEY INTEGRATED TECHNOLOGIES (TK-IT) is to be a top-notch technology solutions provider, not just with our service but with the value we add to the field.

We aim to be seen as the compatible, committed and reliable technology service provider we are, by delivering worthwhile and fulfilling service. And to provide the tools to support our client's achieving the maximum success and growth on all scales.

To reach this, we believe it's our role to help our clients understand all the possible technologies that suit their business needs. It's also our role to keep them updated with the new solutions and technologies by providing all the support needed from our dedicated sales and pre-sales team to guarantee that our client had completely comprehended the needed product. We would also offer our professional opinion all the way and support with all the possible events and workshops to make sure our client gets the best out of the service provided.





# TK-IT MISSION:

With a team of dedicated experts working with passion, our mission at Turnkey Integrated Technology (TK-IT) is to provide our clients with the best-quality of technology-based solutions in a cost-effective manner to help them successfully accomplish their business objectives. We believe in partnership, and we work hard to be our client's reliable partners, that's why we care about providing an efficient and worthwhile added value to our partners with each and every service we deliver.

At TK-IT, we work hard towards being a market leader by surpassing our Customers' expectations in every step we take. This means that we'll always consider their feedback and consider it to improve our service. We're keen to be up to date with the technologies of today and tomorrow regardless of how quick it changes as long as we guarantee our customers consistently have the best apparatuses accessible to these technologies.

The background is a dark, textured surface with a fine, diagonal line pattern. Overlaid on this are several large, semi-transparent gears of different sizes, primarily concentrated on the right side. A complex network of thin, light-colored lines, resembling a circuit board or a data flow diagram, crisscrosses the entire image. These lines connect various points, some of which are marked with small circles or squares. There are also larger, stylized symbols like arrows and clusters of small rectangles scattered throughout the design.

# OUR VALUES

# OUR VALUES



## INTEGRITY

We prioritize transparency and working with integrity! To us, integrity means we fearlessly go for the non-easy moral decision and owning every choice we make. We do invest wholeheartedly in our work and we choose to be straightforward with both our employees and our clients



## COMMITMENT

We're committed to success! The success of our teams, our vision and mission, and above all the success of our clients and partners. Our commitment means that we work with a sense of urgency to everything that concerns our teams and clients.



## SIMPLICITY

Simplicity has always been the secret! We adopt the 'keep it simple' approach within everything related to our business: our marketing, our business model, our products, and even our office space.



## CARING

We care about every and each step our clients take to fulfill their desired business plan and we offer all the possible support for this goal to be accomplished in the most adequate manner.



# OUR VALUES



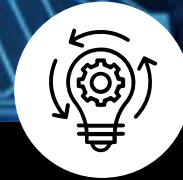
## PRIORITIZING OUR CUSTOMERS

Our clients' satisfaction is what keeps us going and surpassing their expectations is our goal. Regardless of how big or easy the project we're working on is, we dedicate the highest calibers for the best results. This is the belief of every and each person within our organization.



## INCLUSION

In creating a sense of belonging and inviting all points of view and suggestions as well as offering a fair access to opportunities and assets for every person within our organization.



## INNOVATION

Innovation is not limited to a specific group of people within our entity. We strive for perfection which means we always keep an open mind and provide all the possible learning opportunities.

The background is a dark, textured surface with a diagonal line pattern. Overlaid on this are several large, semi-transparent gears of different sizes, primarily on the right side. A complex network of thin, light-colored lines and dots, resembling a circuit board or data flow diagram, spans the entire background. Some of these lines form larger shapes like arrows and rectangles.

# PROFESSIONAL & MANAGED SERVICES



# CONSULTANCY

One of our main priorities at TK-IT is to help our clients meet their needs when it comes to information and Communication Technology as well as Security System's needs. To begin with, our professional team helps build up the systems concept in a vendor technology—agnostic manner taking into consideration the most cost-efficient arrangements.

Our other consultancy services extend to building up the Front-End Engineering Design (FEED) documentation to enable the tendering process. Regardless of how complex or simple the project is, TK-IT conveys multidisciplinary style across various market segments.





## DETAILED DESIGN AND ENGINEERING

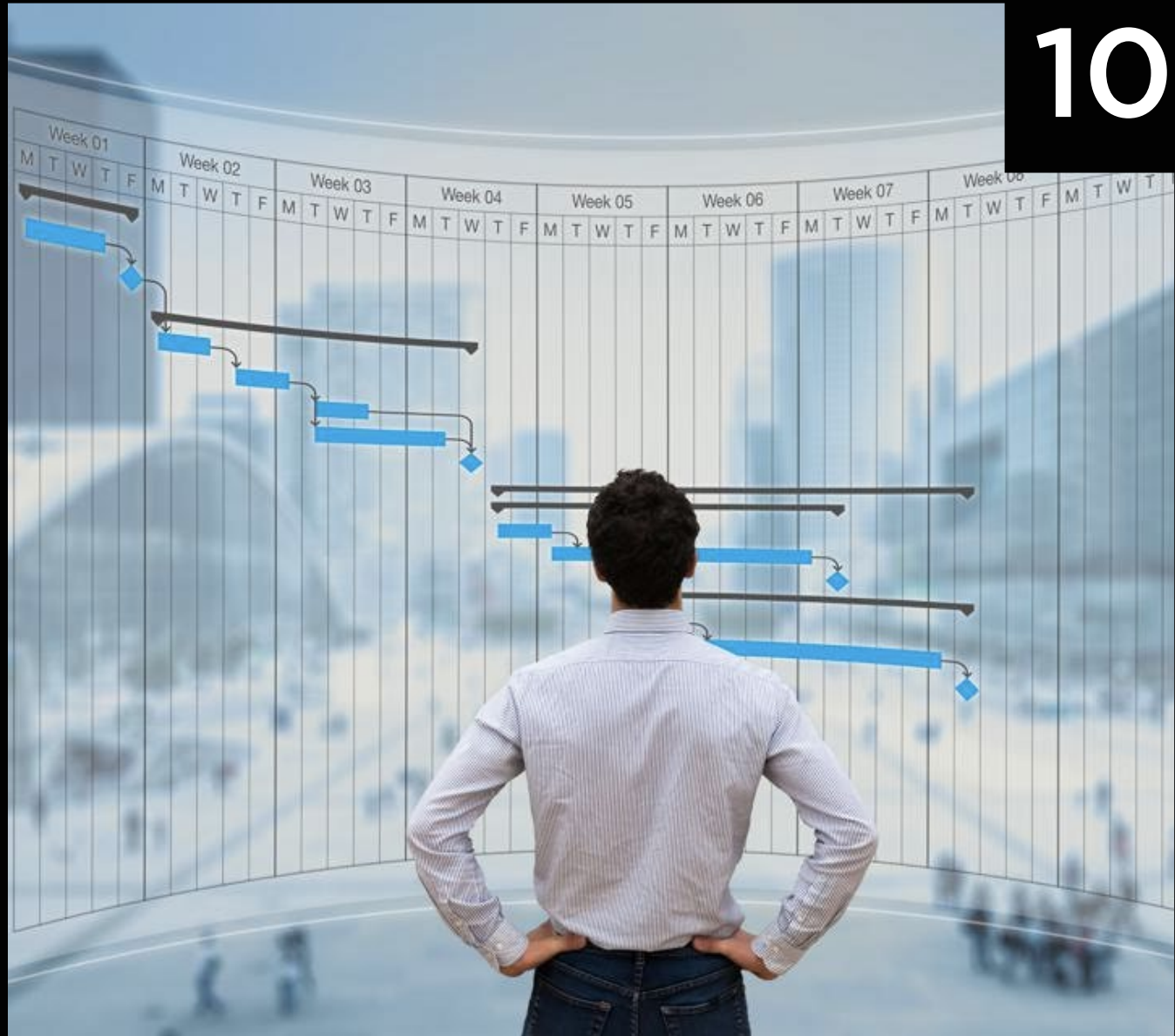
We have an experienced and professional staff whose job is to support you starting from building a plan that is equipped for doing both the Front-end process design, basic engineering and detailed engineering design undertakings.

At TK-IT, we have a thorough understanding of the process pre-requisites and details utilized by both the customers and consultants in the market. Our engineering design team is prepared with all the know-how to undertake specific project scope requirements whether for new plans or for revamping an existing one.

# PROJECT MANAGEMENT

Our project management services start from developing a project execution plan, which involves determining a project objective, organizational chart, detailed tasks, VAT & Integrated System Testing, and integration with 3rd parties and timelines for completion.

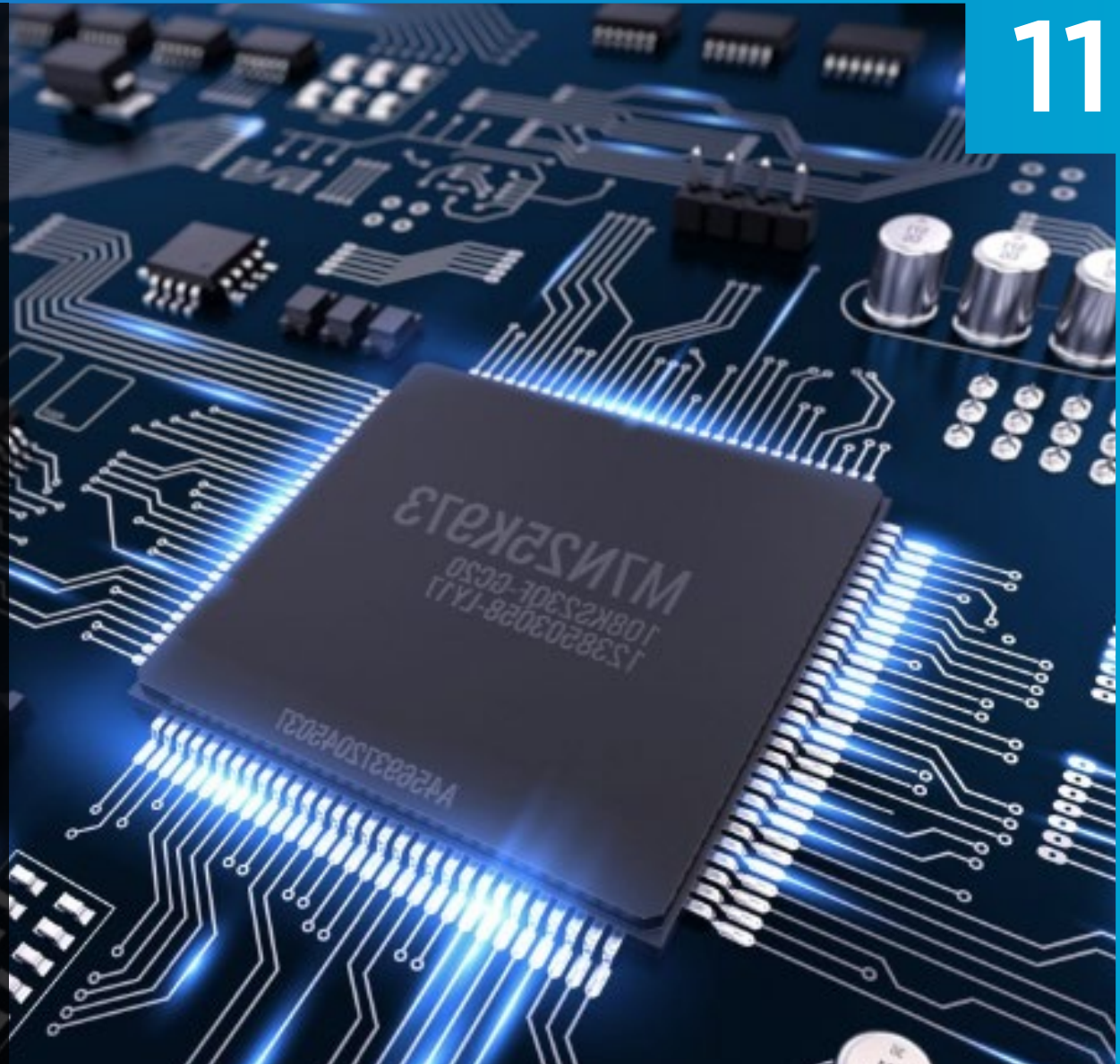
Project Management also incorporates the implementing of the project plan alongside with keeping control to remain on the 'critical path' that is designed to guarantee the project is being executed according to the plan.





# SYSTEM INTEGRATION AND FACTORY ACCEPTANCE TEST

We have a specialized team that knows how to bring together the best components and subsystems from different manufacturers and technology service providers to convey an improved, coordinated and cost-effective Information and Communications Technology (ICT) solutions. Every single integrated system goes through an extensive testing process in our System Integration Center before we install it at the client's office.

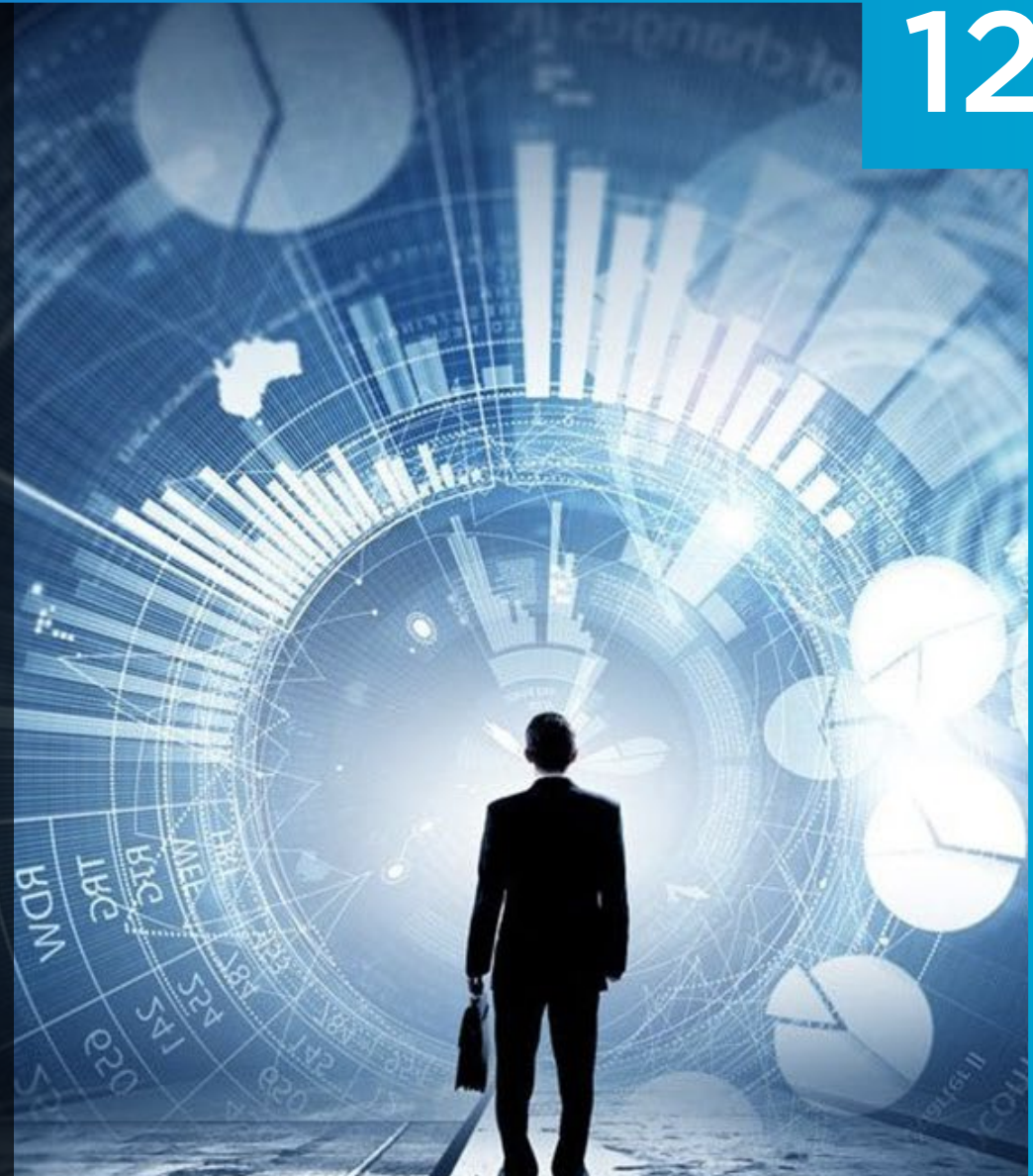




## INSTALLATION, INTEGRATED SYSTEM TESTING AND TRAINING

Our team is experienced with the installation of the Telecommunication and Networking, ELV, Cyber Security, and Cloud & IOT products on-ground and they know all the safety precautions, site security and work requirements among the market.

This encourages effective and convenient site works with guaranteed on-time scheduling. Integrated System Testing is done at the client premises and could be subjected upon customer or Independent Testing Authority experimentation and endorsement. We support you with professional trainers who can direct all aspects of training from Solutions Basics to Operation and Maintenance.





## SUPPORT, OPERATION AND MAINTENANCE

At TK-IT, we provide extended and thorough support to our clients based on the determined Service Level of Agreement.

### PROVIDING THE FOLLOWING:

- Telephone Support Service
- Telephone Support & Remote Diagnosis
- Routine Remote Monitoring Service
- Site Maintenance Support
- Software Support Upgrade and Bug Fix
- Routine (Preventative) Maintenance
- Total Outsourced Maintenance
- Dedicated Spares
- Repair of Client Spares
- Calibration



The background is a dark, textured surface with a diagonal line pattern. It features several large, interlocking gears on the right side. Overlaid on the entire background is a complex network of thin, light-colored lines and dots, resembling a circuit board or a data network map. Some of these lines form larger shapes like arrows and rectangles.

# DATA CENTER DESIGN & PREPARATION.





# 1-DATA CENTER DESIGN & PREPARATION

Data Centers are fundamental to any organization since they form a reliable space where organizations house their most significant data and depend on those datacenters to keep their data accessible, secure and protected.

Data Centers are not a one-size-fit solution for all organizations given that the size and the needs of every business differ. This means that designing and preparing a datacenter is a vital job that requires a high level of efficiency and professionalism.

**TK-IT** has a team of skillful professionals whose job is to help your organization tailor a customized datacenter solution that suits your needs from absolute security to budget, timeline, and maximum efficiency.

# 1.1 SITE PREPARATION:

Each business has its own Information and Communications Technology (ICT) environment and needs.

At **TK-IT**, we have all the needed know-how to design and implement different data center site preparation technologies, each based on your own needs and environment for your business to have an unimpaired datacenter that houses all your ICT gear and information using these safety measures:

- Armored Fire-Rated Doors
- Raised Floors
- Epoxy Floor Painting
- Fire-Rated Painting
- Lighting
- Earthing
- Fire Alarm solution
- Fire Fighting solution
- Sensors (Temperature, Smoke, Heat, Humidity & etc..)





## 1.2 POWER:

Keeping your data center in a stable condition is crucial for your ICT systems. **TK-IT** is a professional and reliable service provider that can assist you with managing and maintaining the maximum performance of your datacenter and guarantee no issues will occur, this will be achieved by using the following power solutions:

- Classic UPS
- Modular UPS
- Static Transfer Switch (STS)
- Isolated Transformer



## 1.3 COOLING:

The electrical force used in your data center is usually converted to heat which can definitely harm and destroy both your hardware and data restored on it. TK-IT's cooling solutions support your datacenter with both In-Room and In-Row cooling solutions to keep your datacenter safe and avoid all issues that can occur due to heat problems:

- **IN-ROOM COOLING:**

In-Row Cooling works to preserve the temperature and keep it balanced with high tolerance for low-density racks.

- **IN-ROW COOLING:**

In-Row cooling solutions support with a focused cooling either in smaller datacenters or for high-density racks in bigger ones.





## 1.4 MANAGEMENT:

It might be a rather difficult or dull task to manage your datacenter infrastructure. That's why we take care of this for you by providing various reliable Datacenter Management Solutions that suit your business needs. Those technologies help you manage the costs of your running datacenter while expanding its operational capacity.

- Datacenter Infrastructure Management (DCIM)



The background is a dark gray field with a fine, diagonal hatched pattern. Overlaid on this are several large, semi-transparent mechanical gears of different sizes, primarily concentrated on the right side. A complex network of thin, light-gray lines crisscrosses the entire image, resembling a circuit board or a data network map. These lines connect various small circular nodes and some larger, more complex shapes. Some lines have arrowheads pointing in different directions, suggesting flow or connectivity. The overall aesthetic is technical and futuristic.

# NETWORK SOLUTIONS



## 2.NETWORK SOLUTIONS

The network is the main foundation of any business infrastructure, which means it needs to be secure, fast and up to date. For this happen, it needs to be architected by IT experts who comprehend your business strategy and needs and know how to achieve the maximum performance with the least drawbacks through the right routing and switching infrastructure.



## 2.1 SWITCHING & ROUTING

With an emphasis on security and reliability, our engineers carefully work with you to design the right network configuration to enable increased innovation and capacity, combined with reduced costs and complexity. Proper design and configuration of routers and switches is a vital part for an effective network. Our certified expert networkers provide professional consultancy and recommendations on converged IP communications and enhancing your network capabilities.

The network is the main foundation of any business infrastructure, which means it needs to be secure, fast, and up to date. For this to happen, it needs to be architected by IT experts who comprehend your business strategy and needs.

- Software-Defined Networking (SDN)
- Software-Defined WAN (SD-WAN)
- Switching
- Industrial Switches
- Routing
- Virtual Networking

## 2.2 WIRELESS & MOBILITY.

How long do you stay at your desk? From 9:00 to 5:00? Think again! You go to meetings; you meet colleagues in different areas, and you work from home when traffic is unbeatable. What keeps you setting at your desk? It's your PC and your phone! TK-IT solutions set you free. Capitalizing on the wide adoption of smart phones, Mobility solutions will let you move with you voice and data and using your favorite own device and still maintaining business security and data integrity.

The use of a wireless network enables enterprises to avoid the costly process of introducing cables into buildings or as a connection between different equipment locations. TK-IT offers wireless access Solutions with high performance, advanced technology, and highly secure wireless indoor/outdoor Access Points.

TK-IT wireless network services begin with an assessment of the business needs to identify the area to cover, the type of devices enquiring connectivity and the media type flowing over it. Following this a site survey is performed and a report produced detailing the findings and its heat maps. A solution is then designed to offer the performance levels required address all security concerns and ensure it is easy to use and cost effective.





## 2.3 UNIFIED COMMUNICATION.

Unified communications (UC) involve the process of integrating real-time communication services such as instant messaging (chat), presence information, telephony (including IP telephony), video conferencing, call control and speech recognition, with non-real-time communication services such as unified messaging (integrated voicemail, e-mail, SMS and fax). UC is not a single solution, but a set of products that provide a consistent unified user interface and user experience across multiple devices and media types.

- Call Management & Control
- Voice Mail
- Contact Center Solution
- IP Telephony Solutions
- Telepresence & Conference Solutions
- Cloud Collaboration Solutions
- Connected Classrooms
- Mobile Collaborations





## 2.4 SECURITY SOLUTIONS.

The expansion of the networks within your company might put your data and endpoint security at risk. TK-IT's role is to support your business with a layered and incorporated security solutions and technologies to keep your networks secure according to both your present and future needs.

### **THESE SECURITY SOLUTIONS INCLUDE:**

#### **HOST SECURITY:**

- End Point protection EPP
- Patch Management Advanced threat prevention
- Network Admission control NAC
- Mobile device Management MDM
- Multi-Factor Authentication (MFA)

#### **Network Security:**

- Next Generation Firewall NGFW
- Web & Email Gateway
- Network Intrusion Prevention system NIPS
- Data loss prevention
- APT solute



## 2.4 SECURITY SOLUTIONS.

### APPLICATION LAYER:

- Web application firewall
- Dynamic & Static Application Testing
- Distributed Denial of services protection (DDOS protection).

### PERIMETER SECURITY:

- Unified threat Management UTM
- WAN Optimization and SD-WAN.

### DATA SECURITY:

- Data Classification
- Database Monitoring Scanning
- Backup solution
- Security information and event Management SIEM

### SECURITY SERVICES:

- Penetration test
- Vulnerability assessment
- Security compliance



## 2.5 STRUCTURED CABLING.

Structured cabling systems that meet the requirements of manufacturers' registration and warranty programs. Ensuring customer satisfaction. Long term reliability and confidence in the integrity of the installed product. With the increase in speed and performance being provided by Local Area Networks and Wide Area Networks. Fiber Optic technology is coming more to the forefront in the design and planning of structured cabling systems. The proprietary structured cabling systems supplied by **TK-IT** can be installed with Fiber Optic cabling to facilitate any design requirement. From campus to single building or multiple floor office environments. Intelligent Infrastructure Management Solutions from **TK-IT** provide real-time control and monitoring of network infrastructures and connected devices. These solutions simplify network planning. Implementation and management and provide fault detection and alerts to ensure business continuity.





# HARDWARE SOLUTIONS

### 3. HARDWARE SOLUTIONS.

With an increased need for a simpler agile, and more adaptive data center capable of responding to disruptive changes, TK-IT supports customers in installing business applications, data analytics, desktop virtualization, and cloud solutions faster by unifying computer, storage, backup, networking, virtualization, and management.

In fact, with its data center's wide portfolio, TK-IT is able to turn the next-generation data center into reality by inducing and performing the transformation of its customers' organizational IT Business into the Cloud.

- Business Continuity
- Improved Business Agility
- Compliance & Data Availability
- Simplified & Centralized Operation Management
- Minimize Data Loss & Fast Recovery for Online Business
- Cost Saving Hardware Solutions.
- High Availability Solutions
- Data Life Cycle Management.
- Backup Solutions
- Disaster Recovery & Replication Solutions
- Wire Routing, Management & Protection
- Disaster Recovery & Replication Solutions
- Virtualization and cloud solutions




A man in a dark suit and white shirt is looking down at a laptop he is holding. He is standing in a server room with several racks of servers visible in the background. The lighting is soft, and the focus is on the man and his laptop.

## 3. HARDWARE SOLUTIONS.

### HW SOLUTIONS INCLUDES:

- Desktop (PCs)
- Laptops
- Tablets
- Thin Clients
- Multi-function Printers (MFP)
- Scanners
- Interactive boards
- Storage Services
- Backup solutions
- Enterprise Servers
- Data Protection Services
- Business Continuity & Availability
- Converged Infrastructure
- Data Science & Big Data Analytics
- Software Defined Data Center
- Cloud Solution

The background features a dark, textured surface with a fine grid of diagonal lines. Overlaid on this are faint, light-gray circuit traces and several interlocking gears of varying sizes, primarily concentrated on the right side of the image. The text 'EXTRA LOW VOLTAGE (ELV)' is prominently displayed in the center-left area in a bright blue, sans-serif font.

# EXTRA LOW VOLTAGE (ELV)





## 4. INTEGRATED EXTRA LOW VOLTAGE (ELV)

When it comes to your Audio & Video (A/V) technology integration, you need a trustworthy service provider with the highest quality of products. We customize every project to fit your needs. Our professional team has the ability to integrate a whole room and provide you with all the control over your Audio and Visual components.

TK-IT provides you with a wide range of A/V applications including:

- Stadiums and Sport Venues
- Large Screens and Video Walls
- Smart Education
- Auditoriums and Meeting Rooms
- Conference Centers
- Video conferencing
- Theatres and Studios
- Airport and Transportation Solution



## 4.1 VIDEO SURVEILLANCE.

We continuously work on pushing the boundaries of technology to improve smart solutions that go beyond the maximum-security needs of today and exceed expectations.

### **INDOOR CAMERAS**

Indoor cameras are the best choice for residential, office, and retail environments. They're available in a wide range of models, this includes those ones with vandal-resistant housing, day/night functionality, PTZ, tamper detection and even more.

### **OUTDOOR CAMERAS**

Outdoor cameras are specially made to handle the tough conditions of the outdoor use. The cameras are typically covered in IP66 or IP-67 rated weatherproof housing that protects them against wind, moisture, dust, and other difficulties. Many outdoor IP cameras are also feature a day/night functionality for 7/24 security.

### **PTZ CAMERAS**

With PTZ IP cameras, camera operators have a wider range of controls available to monitor bigger spots and zero in on specific individuals, objects or activities. The flexibility of PTZ cameras allow you to pan, tilt, and zoom with either manual or automatic controls.



## 4.2 ACCESS CONTROL & OFFLINE KEYCARD SYSTEM.

### ACCESS CONTROL & TIME ATTENDANCE

Our portfolio incorporates all kinds of hardware Access Control as required in big business applications with particularly difficult requirements. The range of solutions extends from basic variants to complicated solutions required when an application needs to ensure the maximum security. Our portfolio doesn't include classic card readers only; it also includes bio-metric readers in the form of fingerprint scanners.

Our systems are award-winning access control systems that broaden abilities, improve operational efficiencies and ingrain valuable assets, resources and ensure the safety and security of people.

If you want to ensure the safety of your people and by turn the ultimate success of your organization, then it's better to invest in the right technology of which our solutions guarantee.

### OFFLINE KEYCARD SYSTEM

Offline keycard systems may have different name and different variants as well as technologies vary from one system to another but there is no doubt that there are indispensable in any organization. Those systems have one main function which is to keep your organization safe and restrict any unwanted access to it, this also works if you need to keep a certain area within your organization restricted.



# 4.3 IPTV

With IPTV, it's easy to dole out live terrestrial and satellite TV and radio, video, DVDs, digital Video on Demand (VoD), advanced signage, information boards and web content all through your office. All this multimedia content can be displayed on standard and Smart TVs, larger format displays, and desktops.





## 4.4 PUBLIC ADDRESS SYSTEM.

PA Systems or Public Address Systems are mainly used to allow you address a range audience at a higher volume within your organization. A basic PA system consists of an amplifier, a microphone and a loudspeaker, but other systems could be more advanced depending on the area and the need.



## 4.5 SECURITY GATES.

- X Ray.
- Turnstile.
- Barrier Systems.
- Pillars and Housing.
- Slide Gate Openers.





## 4.6 FIRE ALARM SYSTEM.

We provide you with Fire and Life Safety Solutions that are proven to minimize risks and limit the chances of property loss in order to guarantee a safer environment for people within your organization. Regardless of whether you manage the security of a school or an industrial facility, from one PC or a huge commercial or governmental network our Fire and Life Safety Solutions are flexible to fit any whatever size your facility is and whatever system configuration it needs. Those solutions include:

- Life Safety System Installation, Maintenance and Retrofitting
- Differentiated operational protection.
- Fire and Smoke Detection and Alarm
- Emergency Communication Controls and Networks
- Fire, Security and HVAC System Integration
- Emergency Preparedness Planning
- Building Automation
- Critical Process Control
- Video-based Event Analysis
- Smoke Management



The background is a dark, textured surface with a fine, diagonal line pattern. Overlaid on this are several large, semi-transparent gears of different sizes, primarily concentrated on the right side. A complex network of thin, light-colored lines, resembling a circuit board or data flow diagram, crisscrosses the entire image. These lines include various symbols such as circles, squares, and arrows, some of which are highlighted with a slight glow. The overall aesthetic is high-tech and industrial.

# OUR PARTNERS







Kidde suprema



HIKVISION®

premium<sup>®</sup>  
line



Panasonic



BOSCH

SAMSUNG



COMMSCOPE®

FAAC  
Simply automatic.



# CONTACT US



tk-it.com



002 -0117118799



002 -26108006



002 -26108006



408 Al Defaa Al Watany, South Investors  
Area- 5 th Settlement, Cairo.



The background is a dark navy blue, overlaid with a complex, glowing blue circuit pattern. The pattern consists of numerous parallel lines of varying thicknesses, some forming rectangular loops and others branching out like a network. Small, solid blue circles are placed at various points along these lines, resembling solder points or data nodes. The lines and dots have a slight gradient, giving them a three-dimensional, glowing appearance. The overall aesthetic is high-tech and futuristic.

SHAPING THE WORLD FOR YOU